

FABRICATION MATERIALS

PT NO	COMPONENT DESCRIPTION	N.S. (MM)	ITEM CODE	QTY
-------	-----------------------	-----------	-----------	-----

PIPE

1	PIPE SCH40 BE ASME B36.10M A53Gr.B-S	150	AAPA2DCBQ0	15.8M
---	--------------------------------------	-----	------------	-------

FITTINGS

2	THREAOLET 3000LB Rc(PT) ASME B16.11 A105	150 x 25	ABLT6YCAQF	1
3	90DEG LR ELBOW SCH40 BE ASME B16.9 A234Gr.WPB-S	150	AAEA2DCEQ0	4

FLANGES

4	SLIP-ON FLANGE 300LB RF ASME B16.5 A105	150	AAFHBDAQ0	1
---	---	-----	-----------	---

ERECTION MATERIALS

PT NO	COMPONENT DESCRIPTION	N.S. (MM)	ITEM CODE	QTY
-------	-----------------------	-----------	-----------	-----

FITTINGS

5	SQUARE HEAD PLUG 3000LB R(PT) ASME B16.11 A105	25	ABYS5YCAFF	1
---	--	----	------------	---

GASKETS

6	SPIRAL WOUND GASKET 300LB RF 4.5t ASME B16.20 SUS304	150	AAGWB1EQ0	1
---	--	-----	-----------	---

BOLTS

7	130 mm STUD BOLT ASME B18.2.1 A193Gr.B7+HDG	20		12
8	HEAVY HEX NUT ASME B18.2.2 A194Gr.2H+HDG	20		24

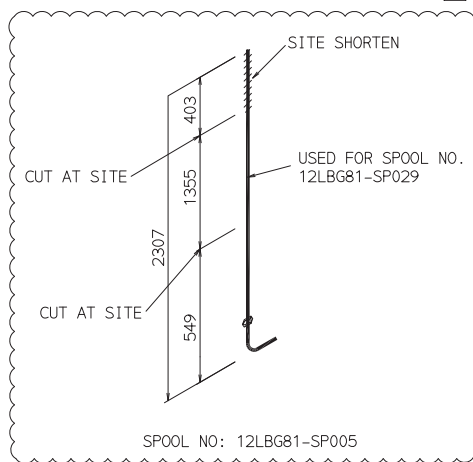
VALVES / IN-LINE ITEMS

9	GATE VALVE 300LB BW API 600 A216Gr.WCB	150		1
---	--	-----	--	---

PIPE SPOOLS

12LBG81-SP001 12LBG81-SP002 12LBG81-SP003 12LBG81-SP004 12LBG81-SP005
 12LBG81-SP006 (12LBG81-SP029)

CONT. ON
 4KA-TQ-XVTB1-0009-5
 DRG 4
 X 626416
 Y 801890
 EL +12327



SPOOL NO: 12LBG81-SP005

X 623813
 Y 793224
 EL +15891

3 90.6°
 EL +15792
 ELBO

150x25NS
 ORIENTATION DIRECTION
 E 89.40 U

9 12LBG81-AA001
 VALV

12LBG81-SP005

12LBG81-SP006

3 EL +13250
 ELBO

150NS

(TPS-AS21)

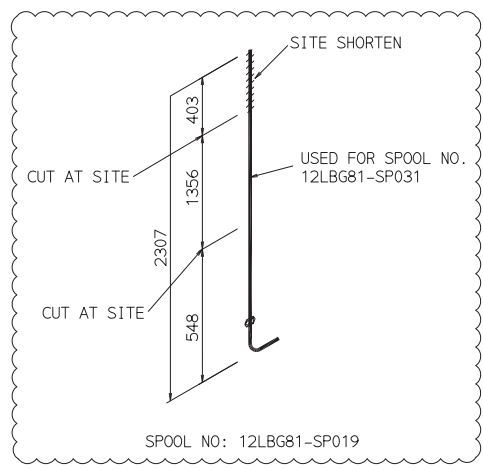
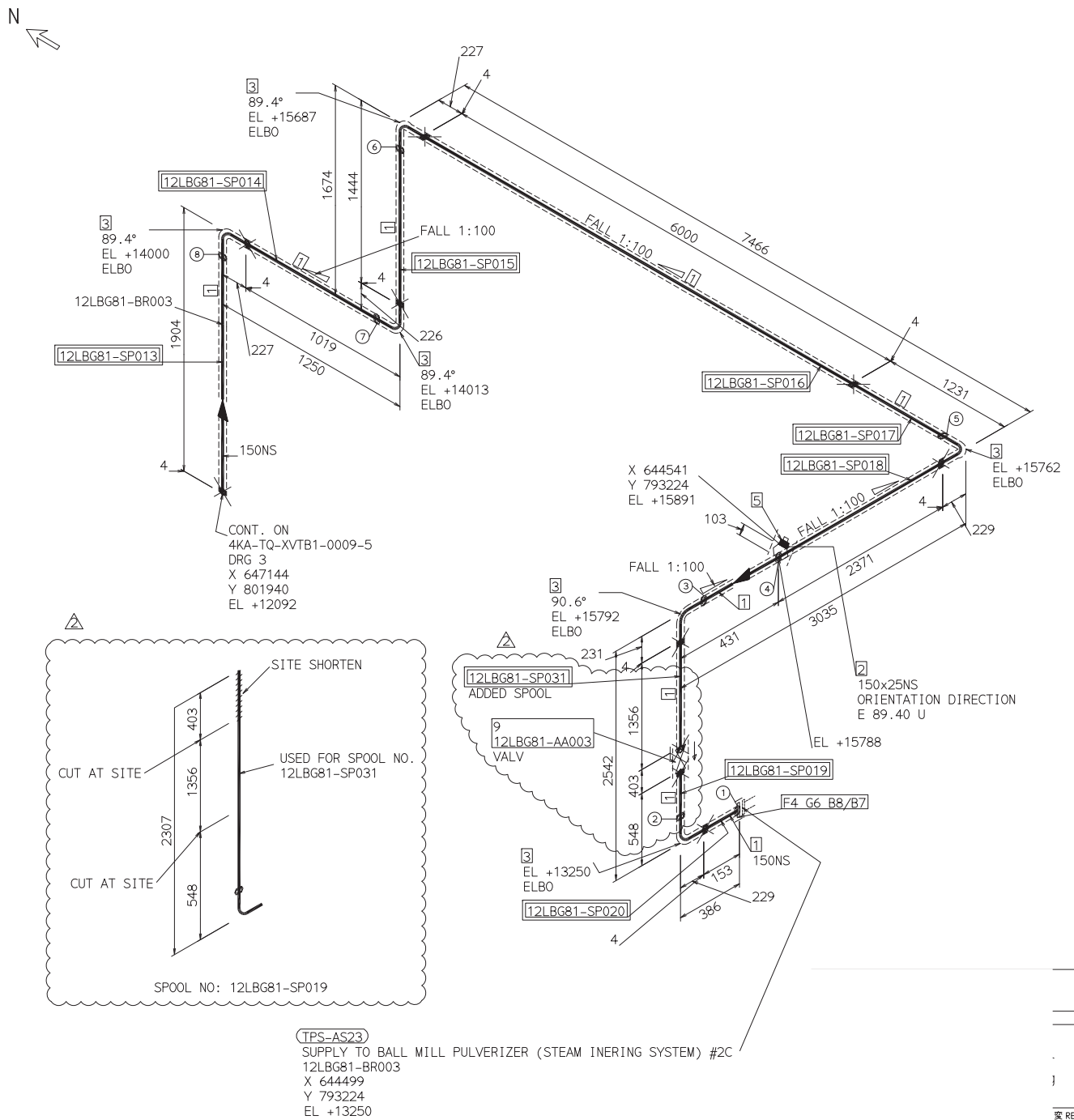
SUPPLY TO BALL MILL PULVERIZER (STEAM INERING SYSTEM) #2A
 12LBG81-BR001
 X 623771
 Y 793224
 EL +13250

SHOP WELD	FIELD WELD	SOCKET WELD	SCREWED JOINT	SITE CONNECTION	PIPE SUPPORT	INS PIPE	TRACED PIPE
—	—	—	—	—	—	—	—

FABRICATION MATERIALS

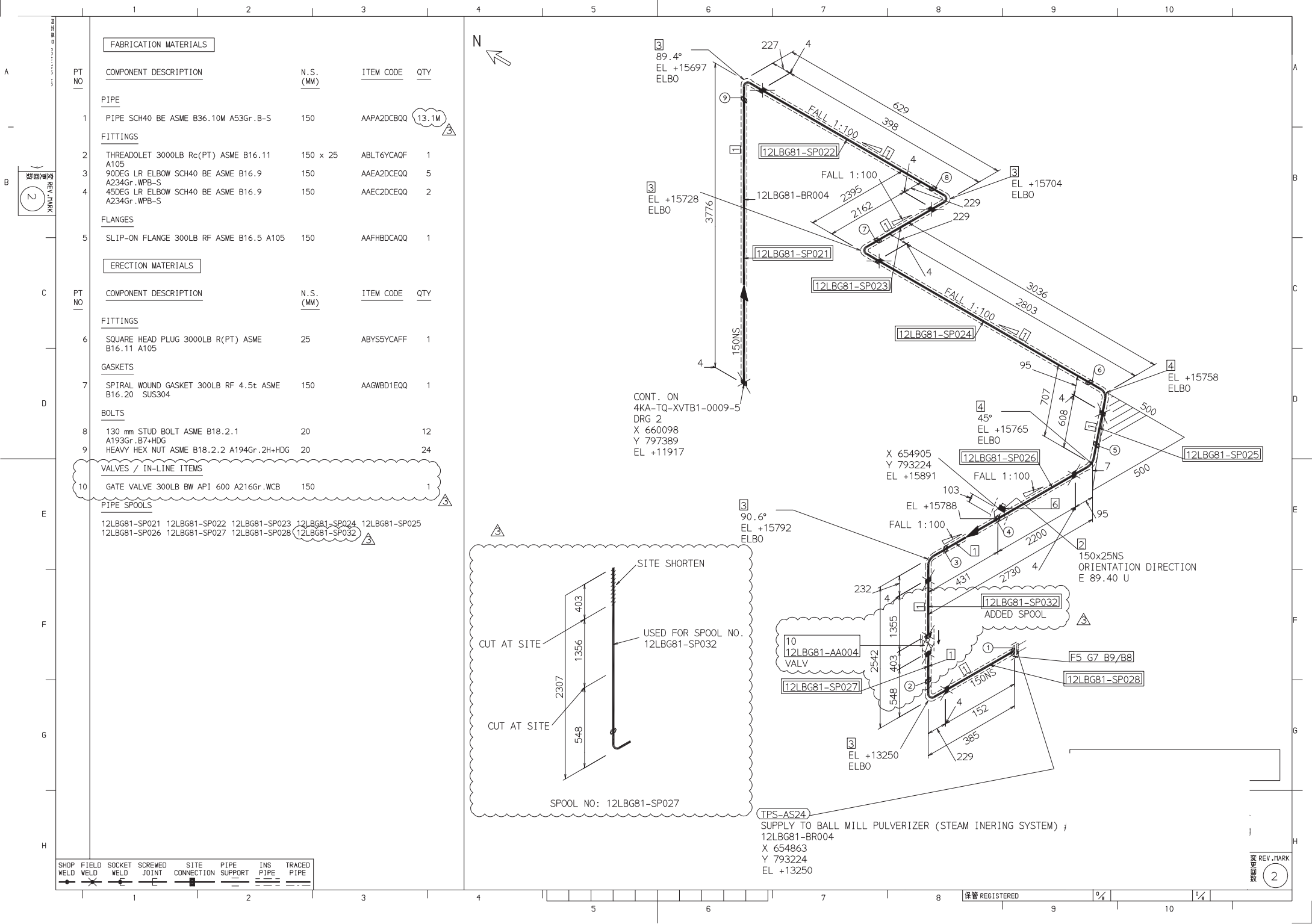
PT NO	COMPONENT DESCRIPTION	N.S. (MM)	ITEM CODE	QTY
PIPE				
1	PIPE SCH40 BE ASME B36.10M A53Gr.B-S	150	AAPA2DCBQ0	15.1M
FITTINGS				
2	THREAOLET 3000LB Rc(PT) ASME B16.11 A105	150 x 25	ABLT6YCAQF	1
3	90DEG LR ELBOW SCH40 BE ASME B16.9 A234Gr.WPB-S	150	AAEA2DCEQ0	6
FLANGES				
4	SLIP-ON FLANGE 300LB RF ASME B16.5 A105	150	AAFHBQCAQ0	1
ERECTION MATERIALS				
PT NO	COMPONENT DESCRIPTION	N.S. (MM)	ITEM CODE	QTY
FITTINGS				
5	SQUARE HEAD PLUG 3000LB R(PT) ASME B16.11 A105	25	ABYS5YCAFF	1
GASKETS				
6	SPIRAL WOUND GASKET 300LB RF 4.5t ASME B16.20 SUS304	150	AAGWBD1EQ0	1
BOLTS				
7	130 mm STUD BOLT ASME B18.2.1 A193Gr.B7+HDG	20		12
8	HEAVY HEX NUT ASME B18.2.2 A194Gr.2H+HDG	20		24
VALVES / IN-LINE ITEMS				
9	GATE VALVE 300LB BW API 600 A216Gr.WCB	150		1
PIPE SPOOLS				

12LBG81-SP013 12LBG81-SP014 12LBG81-SP015 12LBG81-SP016 12LBG81-SP017
 12LBG81-SP018 12LBG81-SP019 12LBG81-SP020 12LBG81-SP031



(TPS-AS23)
 SUPPLY TO BALL MILL PULVERIZER (STEAM INERING SYSTEM) #2C
 12LBG81-BR003
 X 644499
 Y 793224
 EL +13250

SHOP WELD	FIELD WELD	SOCKET WELD	SCREWED JOINT	SITE CONNECTION	PIPE SUPPORT	INS PIPE	TRACED PIPE
—	—	—	—	—	—	—	—



FABRICATION MATERIALS

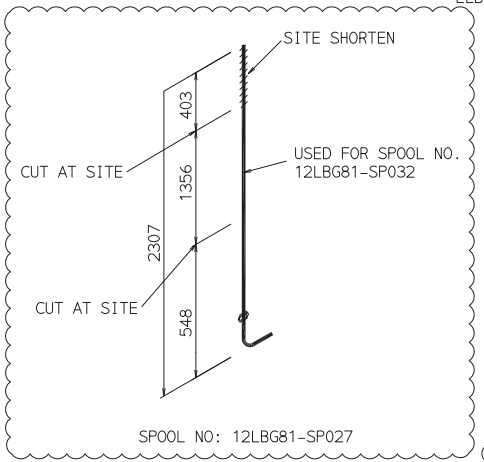
PT NO	COMPONENT DESCRIPTION	N.S. (MM)	ITEM CODE	QTY
PIPE				
1	PIPE SCH40 BE ASME B36.10M A53Gr.B-S	150	AAPA2DCB00	13.1M
FITTINGS				
2	THREDOLET 3000LB Rc(PT) ASME B16.11 A105	150 x 25	ABLT6YCAQF	1
3	90DEG LR ELBOW SCH40 BE ASME B16.9 A234Gr.WPB-S	150	AAEA2DCE0Q	5
4	45DEG LR ELBOW SCH40 BE ASME B16.9 A234Gr.WPB-S	150	AAEC2DCE0Q	2
FLANGES				
5	SLIP-ON FLANGE 300LB RF ASME B16.5 A105	150	AAFHB0CA0Q	1

ERECTION MATERIALS

PT NO	COMPONENT DESCRIPTION	N.S. (MM)	ITEM CODE	QTY
FITTINGS				
6	SQUARE HEAD PLUG 3000LB R(PT) ASME B16.11 A105	25	ABYS5YCAFF	1
GASKETS				
7	SPIRAL WOUND GASKET 300LB RF 4.5t ASME B16.20 SUS304	150	AAGWB01E0Q	1
BOLTS				
8	130 mm STUD BOLT ASME B18.2.1 A193Gr.B7+HDG	20		12
9	HEAVY HEX NUT ASME B18.2.2 A194Gr.2H+HDG	20		24
VALVES / IN-LINE ITEMS				
10	GATE VALVE 300LB BW API 600 A216Gr.WCB	150		1

PIPE SPOOLS

12L BG81-SP021 12L BG81-SP022 12L BG81-SP023 12L BG81-SP024 12L BG81-SP025
 12L BG81-SP026 12L BG81-SP027 12L BG81-SP028 12L BG81-SP032



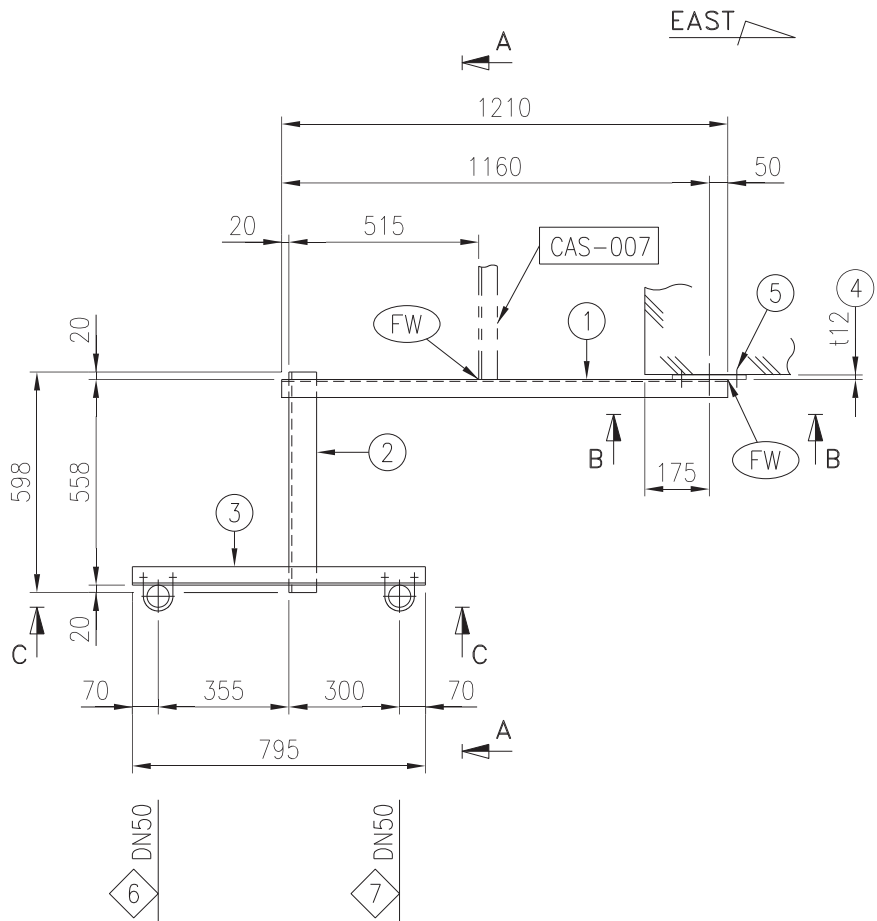
CONT. ON
 4KA-TQ-XVTB1-0009-5
 DRG 2
 X 660098
 Y 797389
 EL +11917

TPS-AS24
 SUPPLY TO BALL MILL PULVERIZER (STEAM INERING SYSTEM) #
 12L BG81-BR004
 X 654863
 Y 793224
 EL +13250

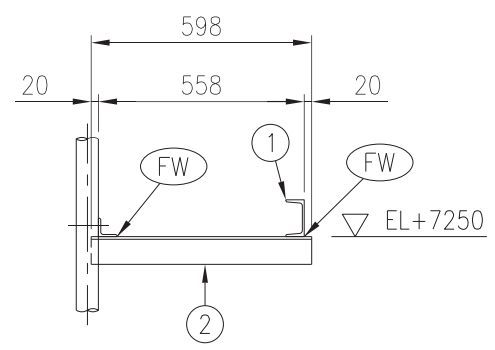
SHOP WELD	FIELD WELD	SOCKET WELD	SCREWED JOINT	SITE CONNECTION	PIPE SUPPORT	INS PIPE	TRACED PIPE

A
B
C
D
E
F

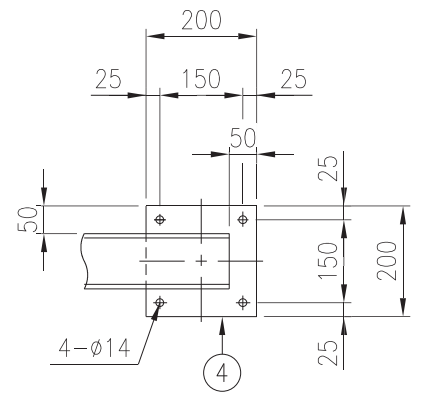
1 2 3 4 5 6 7 8



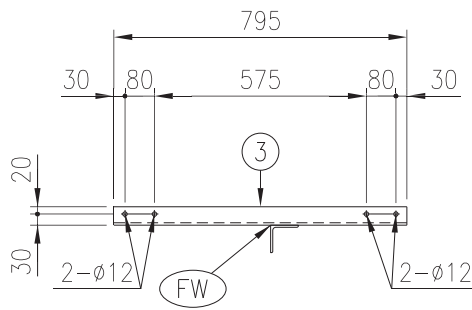
PLAN



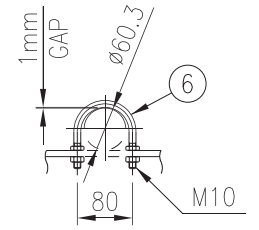
VIEW A-A



VIEW B-B
ANCHOR BOLT HOLES



SECTION C-C
U-BOLT HOLES



DETAIL OF U-BOLT
6 7 DN50

6	U-BOLT	SS400	2	M10 (FOR DN50)	UB005	GALV.
5	HAWK ANCHOR BOLT	SS400 OR EQ	4	M12x140L		GALV.
4	BASE PLATE	SS400	1	t12x200x200		
3	ANGLE	SS400	1	L50x50x6-795L		
2	ANGLE	SS400	1	L75x75x6-598L		
1	C-BEAM	SS400	1	C100x50x5x7.5-1210L		

No.	NAME	MATERIAL	Q'TY	SPEC	PNo.	REMARK
	尺度 SCALE	単位 UNITS	名称 TITLE	ハンガ番号 HANGER NO. 1/1		
	1/20	mm	HANGER ASSEMBLIES	CAS-008		

変更回数
1

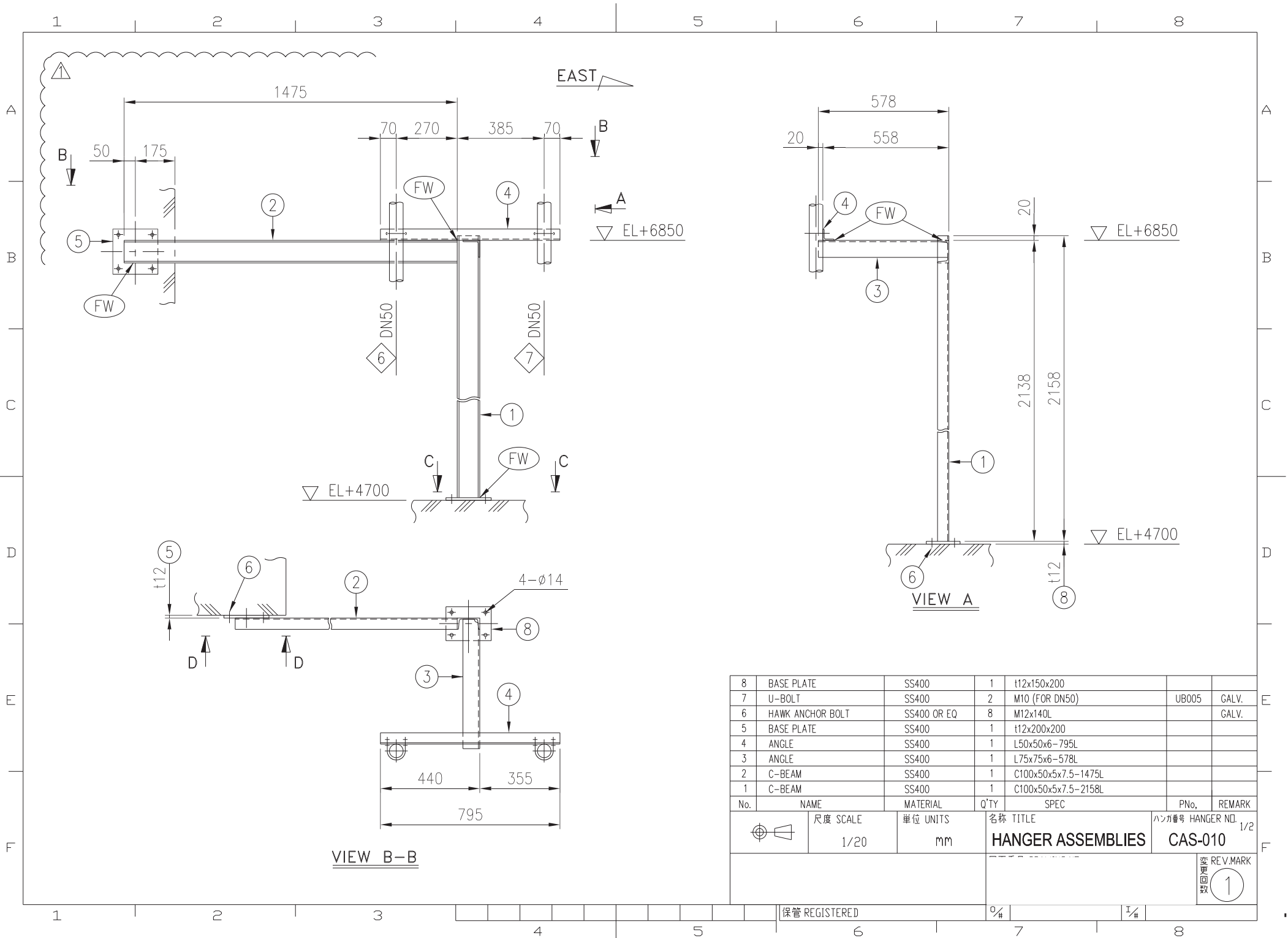
1 2 3 4 5 6 7 8

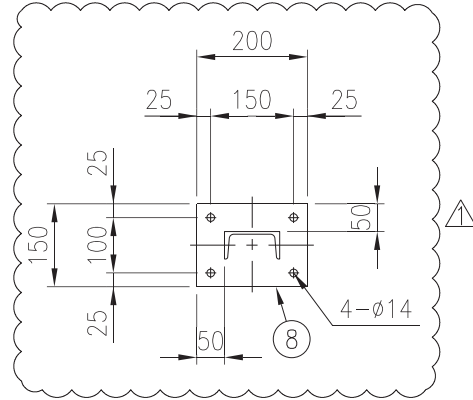
保管 REGISTERED

1/4

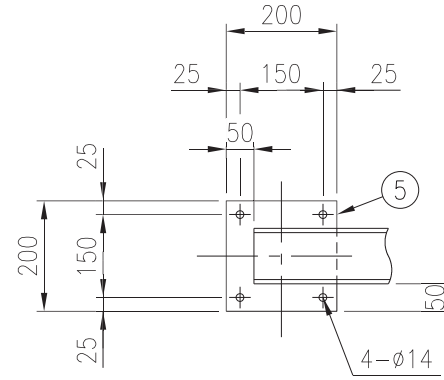
1/4

8

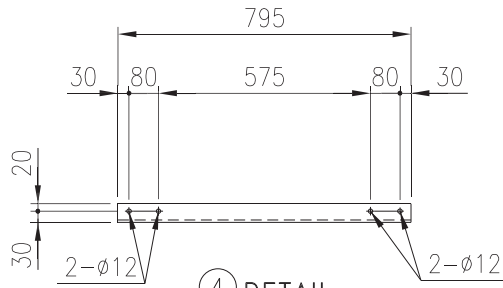




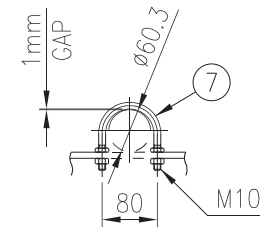
VIEW C-C
ANCHOR BOLT HOLES



VIEW D-D
ANCHOR BOLT HOLES



④ DETAIL
U-BOLT HOLES



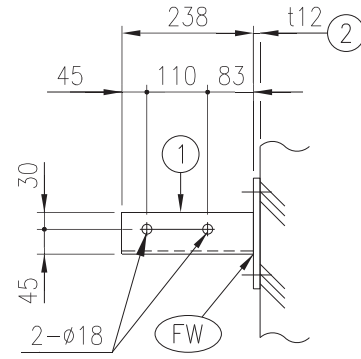
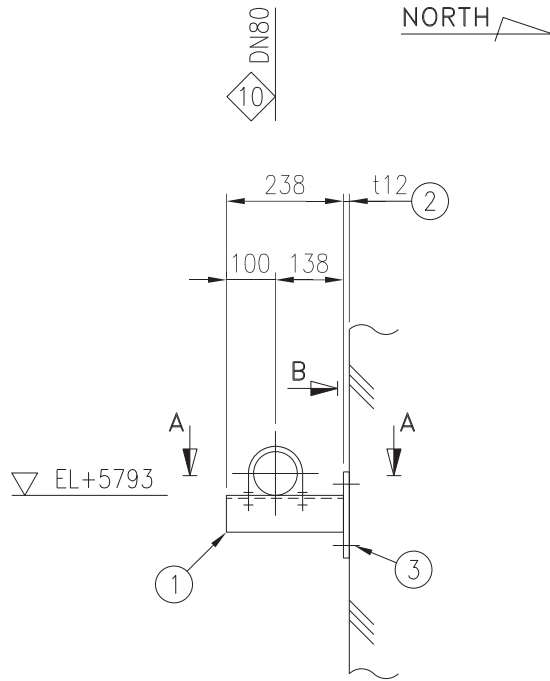
DETAIL OF U-BOLT

⑥ ⑦ DN50

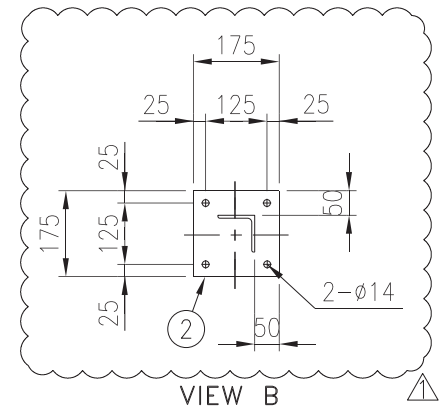
	尺度 SCALE	単位 UNITS	名称 TITLE	ハンガ番号 HANGER NO.
	1/20	mm	HANGER ASSEMBLIES	CAS-010 2/2
保管 REGISTERED			変更回数 REV.MARK 1	

A
B
C
D
E
F

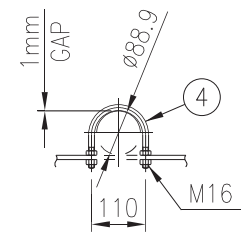
1 2 3 4 5 6 7 8



SECTION A-A
U-BOLT HOLES



VIEW B
ANCHOR BOLT HOLES



DETAIL OF U-BOLT

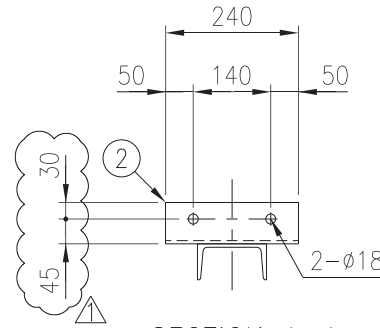
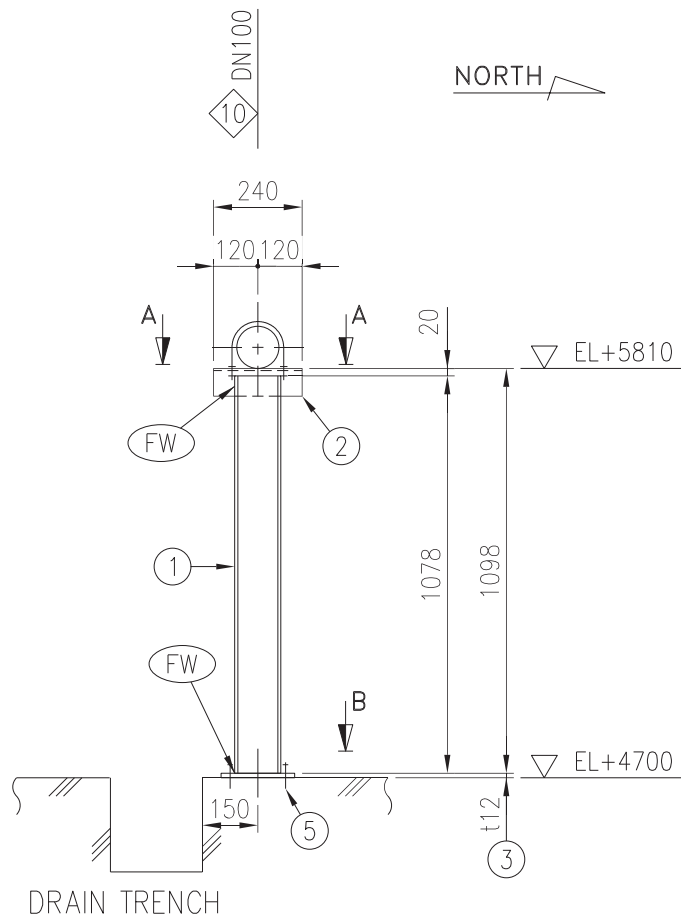
DN80

4	U-BOLT	SS400	1	M16 (FOR DN80)	UB007	GALV.
3	HAWK ANCHOR BOLT	SS400 OR EQ	4	M12x140L		GALV.
2	BASE PLATE	SS400	1	t12x175x175		
1	ANGLE	SS400	1	L75x75x6-238L		
No.	NAME	MATERIAL	Q'TY	SPEC	PNo.	REMARK

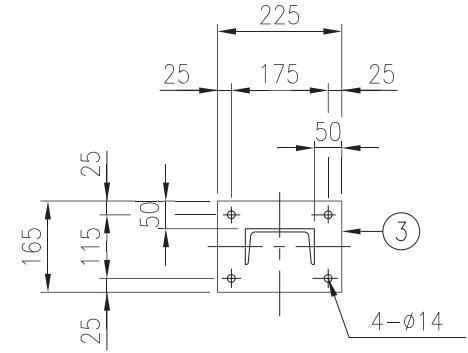
	尺度 SCALE	単位 UNITS	名称 TITLE	ハンガ番号 HANGER NO.
	1/15	mm	HANGER ASSEMBLIES	CAS-011
				変更回数 REV.MARK
				1

A
B
C
D
E
F

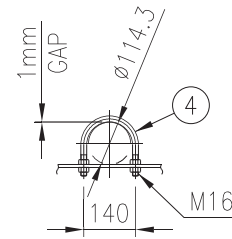
1 2 3 4 5 6 7 8



SECTION A-A
U-BOLT HOLES



VIEW B
ANCHOR BOLT HOLES



DETAIL OF U-BOLT

DN100

5	HAWK ANCHOR BOLT	SS400 OR EQ	4	M12x140L		GALV.
4	U-BOLT	SS400	1	M16 (FOR DN100)	UB008	GALV.
3	BASE PLATE	SS400	1	t12x165x225		
2	ANGLE	SS400	1	L75x75x6-240L		
1	C-BEAM	SS400	1	C125x65x6x8-1078L		
No.	NAME	MATERIAL	Q'TY	SPEC	PNo.	REMARK

	尺度 SCALE	単位 UNITS	名称 TITLE	ハンガ番号 HANGER NO.
	1/20	mm	HANGER ASSEMBLIES	CAS-012 1/1
				変更回数
				1

保管 REGISTERED

1/4

1/4

1 2 3 4 5 6 7 8