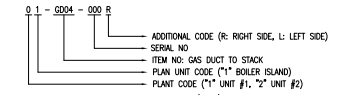


KEY PLAN

NOTE

1. THE QUANTITY SHOWN ON ARRANGEMENT DWG IS FOR ONE (1) UNIT.
2. THE QUANTITY REQUIRED ARE TWO (2) UNITS ON CONTRACT.
3. THE TOLERANCES OF SHOP MFG. & SITE ERECTION FOR DUCT TO BE SHOWN ON REF. DRAWING NO. 9.
4. DUCT PLATE THICKNESS TO BE USED 6 mm.
5. THE DUCT DIMENSION IS INSIDE OF DUCT PLATE AND ALL UNITS ARE IN mm UNLESS NOTES.
6. ALL PAINTING WORK TO BE APPLIED AS PER PAINTING PROCEDURE.
7. ALL PARTS NO. TO BE MARKED AS BELOW



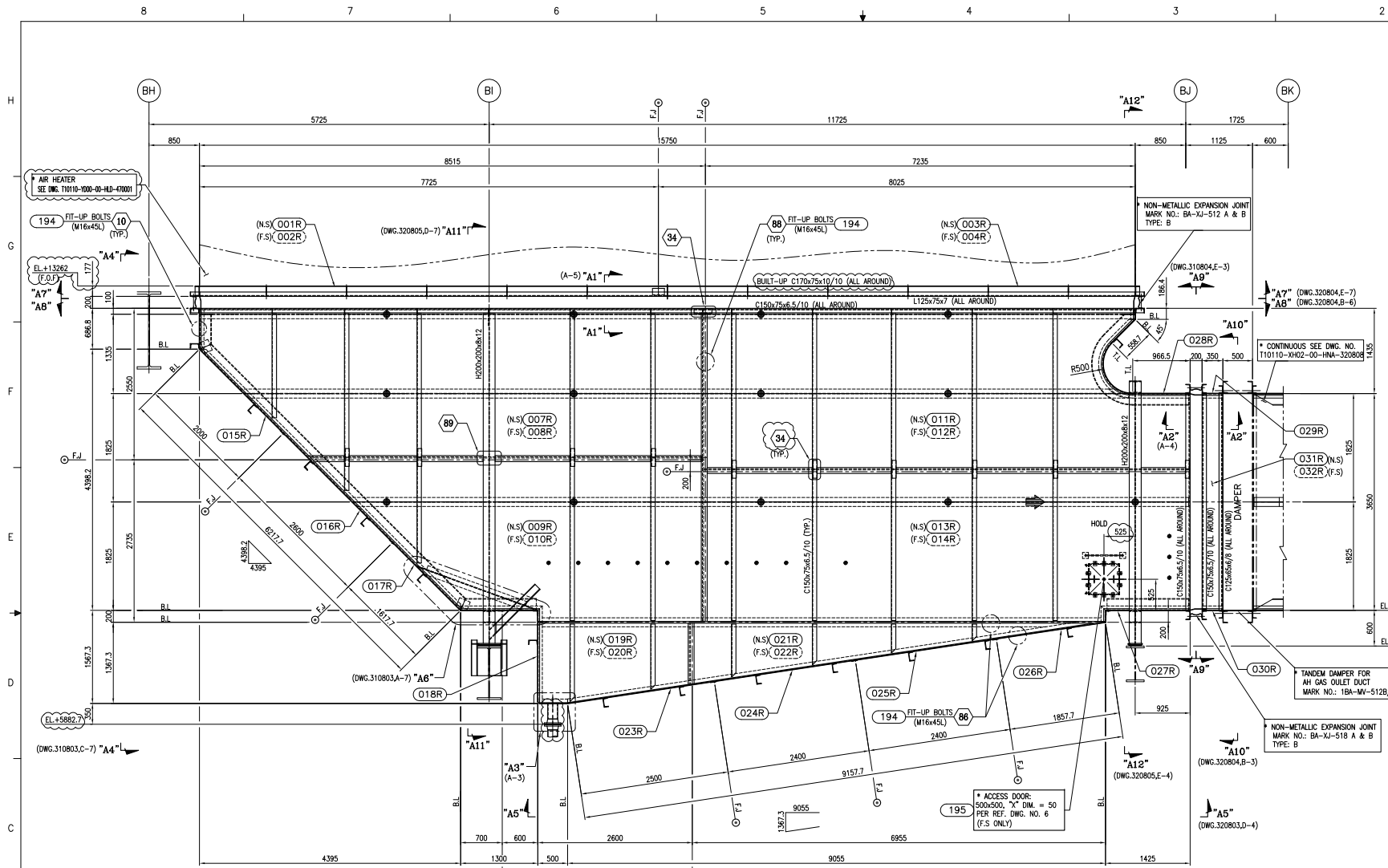
8. THE ARRANGEMENT DWG IS DRAWN RIGHT HAND (000R) BASE ON CENTER LINE OF UNIT, AND OTHER SIDE (000L) IS OPPOSITE HAND.
9. THE TEFLON TO BE BONDED ON SLIDING PLATE AS PER TEFLON LINING PROCEDURE

REFERENCE STANDARD DWG'S

1. DUCT CORNER "SS" & "DS" CONSTRUCTION DETAILS ----- T1010-XH02-00-HLA-S310001
2. DUCT STIFFENER & FRAMING CONSTRUCTION DETAILS ----- T1010-XH02-00-HLA-S310002
3. DUCT INSIDE TRUSS & TURNING VANE CONSTRUCTION DETAILS - T1010-XH02-00-HLA-S310003
4. DUCT FIELD JOINT CONSTRUCTION DETAILS ----- T1010-XH02-00-HLA-S310004
5. FLANGE CONSTRUCTION DETAILS ----- T1010-XH02-00-HLA-S310005
6. DUCT ACCESS DOOR DETAILS ----- T1010-XH02-00-HLA-S310006
7. DUCT HANGER ROD & BRACKET CONSTRUCTION DETAILS ----- T1010-XH02-00-HLA-S310007
8. DUCT LINK & STOP CONSTRUCTION DETAILS ----- T1010-XH02-00-HLA-S310008
9. SHOP & ERECTION TOLERANCES FOR DUCT ----- T1010-XH02-00-HLA-S310009
10. STRUCTURAL SHAPE & WELDING INFORMATION ----- T1010-XH02-00-HLA-S310010
11. EXPANSION JOINT ERECTION & TOLERANCE DETAILS ----- T1010-XH02-00-HLA-S310011

FOR APPROVAL

REV.	DATE	DESCRIPTION	BY	CHK	RVR	APP.

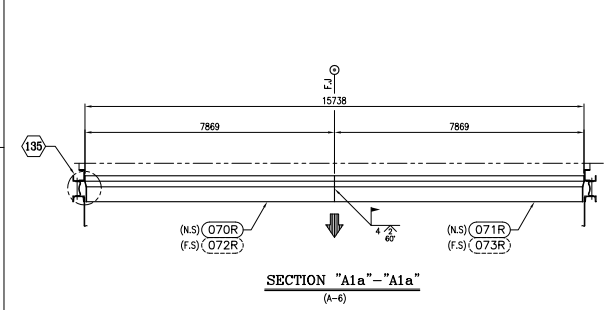


MARK No.	DESCRIPTION	QTY	REMARK
001R/L	PANEL ASS'Y	1/1	
002R/L	PANEL ASS'Y	1/1	
003R/L	PANEL ASS'Y	1/1	
004R/L	PANEL ASS'Y	1/1	
005R/L	PANEL ASS'Y	1/1	
006R/L	PANEL ASS'Y	1/1	
007R/L	PANEL ASS'Y	1/1	
008R/L	PANEL ASS'Y	1/1	
009R/L	PANEL ASS'Y	1/1	
010R/L	PANEL ASS'Y	1/1	
011R/L	PANEL ASS'Y	1/1	
012R/L	PANEL ASS'Y	1/1	
013R/L	PANEL ASS'Y	1/1	
014R/L	PANEL ASS'Y	1/1	"HOLD"
015R/L	PANEL ASS'Y	1/1	
016R/L	PANEL ASS'Y	1/1	
017R/L	PANEL ASS'Y	1/1	
018R/L	PANEL ASS'Y	1/1	
019R/L	PANEL ASS'Y	1/1	
020R/L	PANEL ASS'Y	1/1	
021R/L	PANEL ASS'Y	1/1	
022R/L	PANEL ASS'Y	1/1	
023R/L	PANEL ASS'Y	1/1	
024R/L	PANEL ASS'Y	1/1	
025R/L	PANEL ASS'Y	1/1	
026R/L	PANEL ASS'Y	1/1	
027R/L	PANEL ASS'Y	1/1	
028R/L	PANEL ASS'Y	1/1	
029R/L	PANEL ASS'Y	1/1	
030R/L	PANEL ASS'Y	1/1	
031R/L	PANEL ASS'Y	1/1	
032R/L	PANEL ASS'Y	1/1	
033R/L	PANEL ASS'Y	1/1	
034R/L	PANEL ASS'Y	1/1	
035R/L	PANEL ASS'Y	1/1	
036R/L	PANEL ASS'Y	1/1	
037	PANEL ASS'Y	1	
038	PANEL ASS'Y	1	
039	PANEL ASS'Y	1	
040	PANEL ASS'Y	1	
041	PANEL ASS'Y	1	
042	PANEL ASS'Y	1	
043R/L	PANEL ASS'Y	1/1	
044R/L	PANEL ASS'Y	1/1	
045R/L	PANEL ASS'Y	1/1	
046R/L	PANEL ASS'Y	1/1	
047	PANEL ASS'Y	1	
048	PANEL ASS'Y	1	
049	PANEL ASS'Y	1	
050	PANEL ASS'Y	1	
051	PANEL ASS'Y	1	
052R/L	PANEL ASS'Y	1/1	
053R/L	PANEL ASS'Y	1/1	
054R/L	PANEL ASS'Y	1/1	
055R/L	PANEL ASS'Y	1/1	
056R/L	PANEL ASS'Y	1/1	
057R/L	PANEL ASS'Y	1/1	
058R/L	PANEL ASS'Y	1/1	

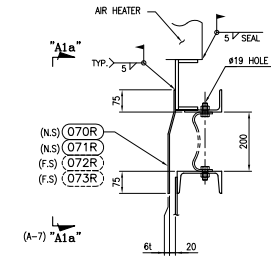
NEXT SHEET

FOR APPROVAL

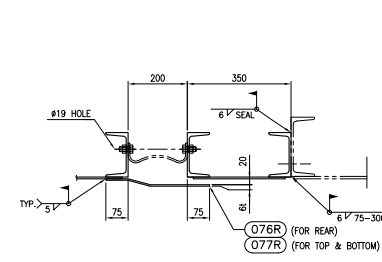
VIEW "A" - "A"
(DWG.310801,C-8)



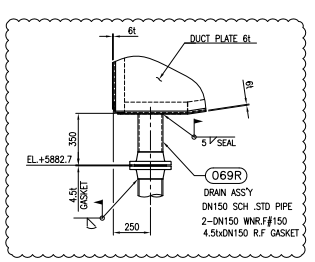
SECTION "A1a" - "A1a"
(A-6)



SECTION "A1" - "A1"
(G-6)



SECTION "A2" - "A2"
(F-3)



DETAIL "A3"
(C-6)

REV.	DATE	DESCRIPTION	BY	CHK	RVR	APP.
△	11.06.08	REVISED AS CLOUD MARK	Y.K.JEONG	J.B.LIM	C.S.YOUNG	Y.S.JANG
△	11.05.10	REVISED AS CLOUD MARK	Y.K.JEONG	J.B.LIM	C.S.YOUNG	Y.S.JANG
△	11.04.21	REVISED AS CLOUD MARK	Y.K.JEONG	J.B.LIM	C.S.YOUNG	Y.S.JANG
△	11.02.15	REVISED AS CLOUD MARK	Y.K.JEONG	J.B.LIM	C.S.YOUNG	Y.S.JANG
△	11.01.28	FIRST ISSUE	Y.K.JEONG	J.B.LIM	C.S.YOUNG	Y.S.JANG

EAST DELTA ELECTRICITY PRODUCTION COMPANY
EL AIN EL SOKHNA SUPERCRITICAL THERMAL
POWER PLANT UNITS 1&2
2x650 MW GAS/OIL FIRED UNITS

POWER GENERATION ENGINEERING
AND SERVICES COMPANY

Doosan Heavy Industries & Construction

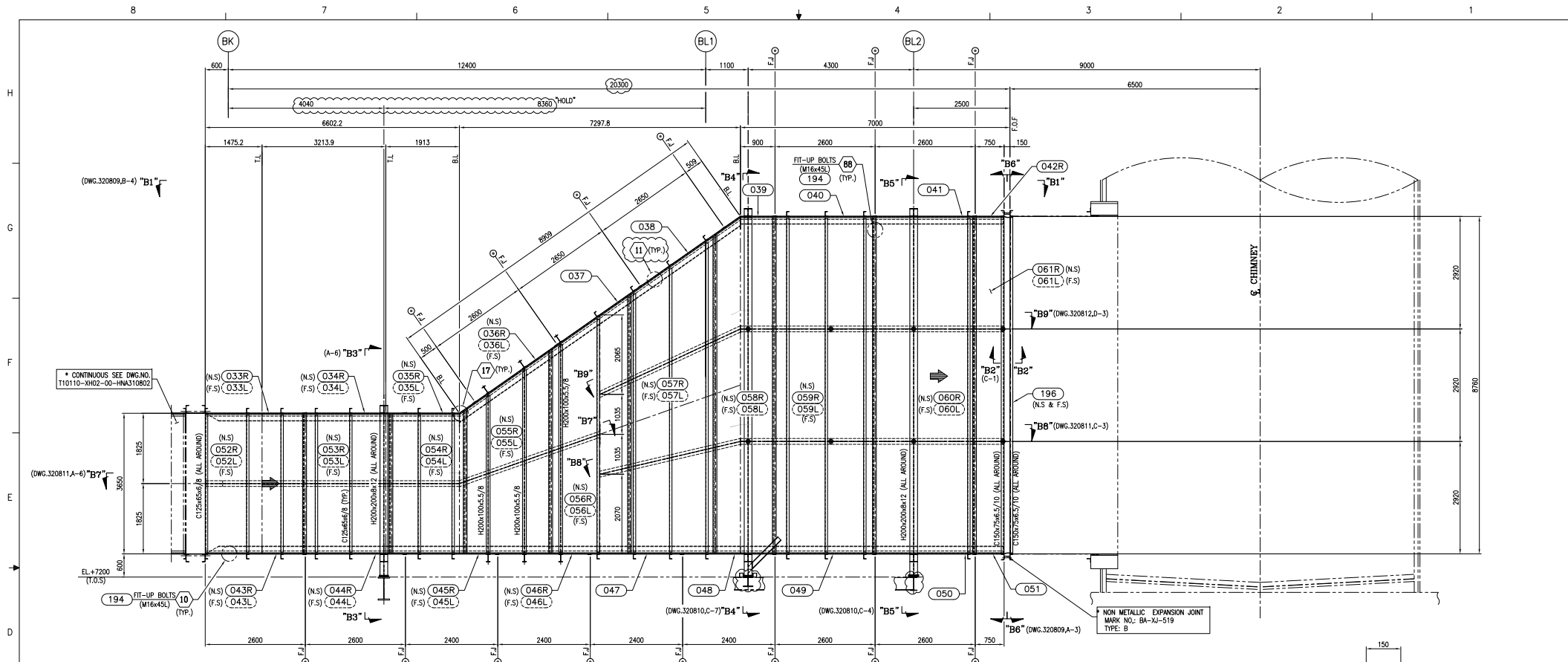
CONTRACT NO. / SPECIFICATION NO. :

PROJECT DOCUMENTATION NO. :		DRAWING TITLE	
DATE	SCALE	DATE	SCALE
11/30	1/35		
DRAWING TITLE		DRAWING TITLE	
GAS DUCT TO STACK		GAS DUCT TO STACK	
ARRANGEMENT		ARRANGEMENT	

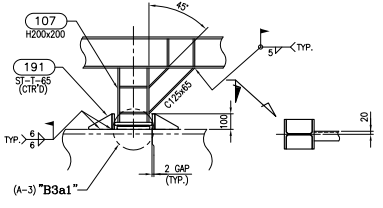
THIS DRAWING IS THE PROPERTY OF DOOSAN HEAVY INDUSTRIES & CONSTRUCTION CO., LTD. IT IS NOT TO BE COPIED OR USED IN ANY WAY DETRIMENTAL TO THE COMPANY.

Doosan Drawing No. T10110-XH02-00-HNA-320802

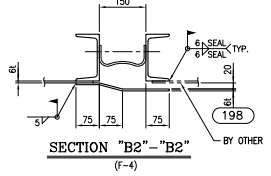
1/1 6



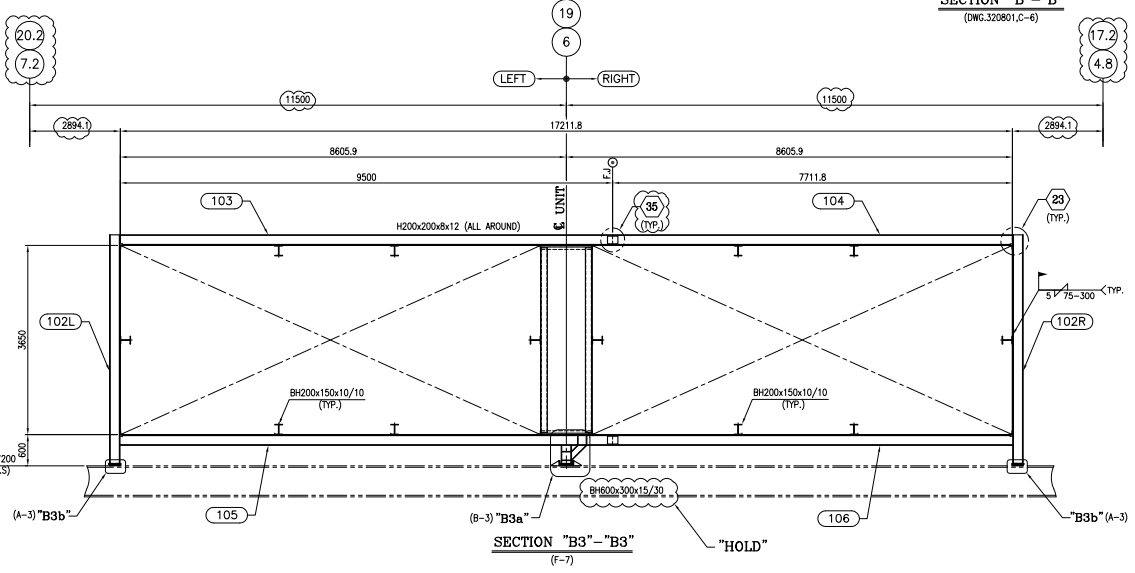
SECTION "B"-"B"
(DWG.320801,C-6)



DETAIL "B3a"
(A-6)



SECTION "B2"-"B2"
(F-4)



SECTION "B3"-"B3"
(F-7)

FOR APPROVAL

REV.	DATE	DESCRIPTION	BY	CHK	RVR	APP.
△	11.06.06	REVISED AS CLOUD MARK	Y.K.JEONG	J.BUM	C.S.YOUNG	Y.S.JANG
△	11.05.05	REVISED AS CLOUD MARK	Y.K.JEONG	J.BUM	C.S.YOUNG	Y.S.JANG
△	11.04.21	REVISED AS CLOUD MARK	Y.K.JEONG	J.BUM	C.S.YOUNG	Y.S.JANG
△	11.02.15	REVISED AS CLOUD MARK	Y.K.JEONG	J.BUM	C.S.YOUNG	Y.S.JANG
△	11.01.28	FIRST ISSUE	Y.K.JEONG	J.BUM	C.S.YOUNG	Y.S.JANG

EAST DELTA ELECTRICITY PRODUCTION COMPANY
EL AIN EL SOKHNA SUPERCRITICAL THERMAL
POWER PLANT UNITS 1&2
2x650 MW GAS/OIL FIRED UNITS

POWER GENERATION ENGINEERING
AND SERVICES COMPANY

DOOSAN Doosan Heavy Industries & Construction

CONTRACT NO. / SPECIFICATION NO. :

SIGNATURES		DATE	SCALE	DRAWING TITLE
DRWN BY	Y.K.JEONG		1/50	GAS DUCT TO STACK ARRANGEMENT
DESIGN BY	J.BUM			
CHECK BY	Y.S.JANG			

THIS DRAWING IS THE PROPERTY OF DOOSAN HEAVY INDUSTRIES & CONSTRUCTION CO., LTD.
IT IS NOT TO BE COPIED OR USED IN ANY WAY DETRIMENTAL TO THE COMPANY.

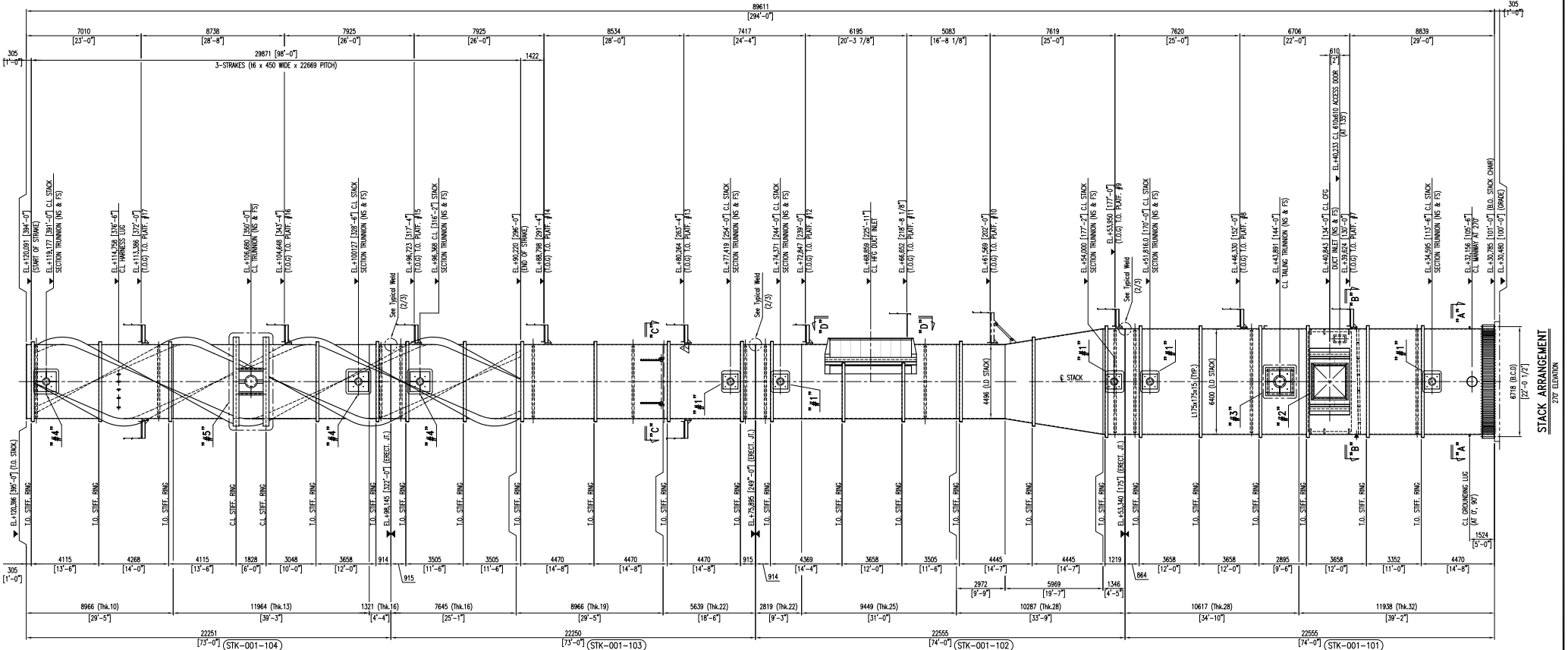
Doosan Drawing No. T10110-XH02-00-HNA-320808

1/1 9

1/11 SIZE

NO.	DESCRIPTION	MATERIAL	Q'TY	SIZE	WT.(KG)		REMARK
					UNIT	TOTAL	
1	LOWER STACK		1	3319-01-04-019-1804-102		3164.3	△
2	LOWER MIDDLE STACK		1	3319-01-04-019-1809-101		8239.4	
3	UPPER MIDDLE STACK		1	3319-01-04-019-1815-104		53239.8	
4	UPPER STACK		1	3319-01-04-019-1815-1010		47916.4	

TOTAL WEIGHT FOR 01 UNIT = **31586.3** (kg)



REV	DESCRIPTION	DWN	CKD	SE	ME	PE	PM	DM	DATE	SCALE:	SCALE	CAD:	33108-000-000	PROJECT NO.	REV.

MANUFACTURER	
DWG. TITLE:	
PROJECT:	